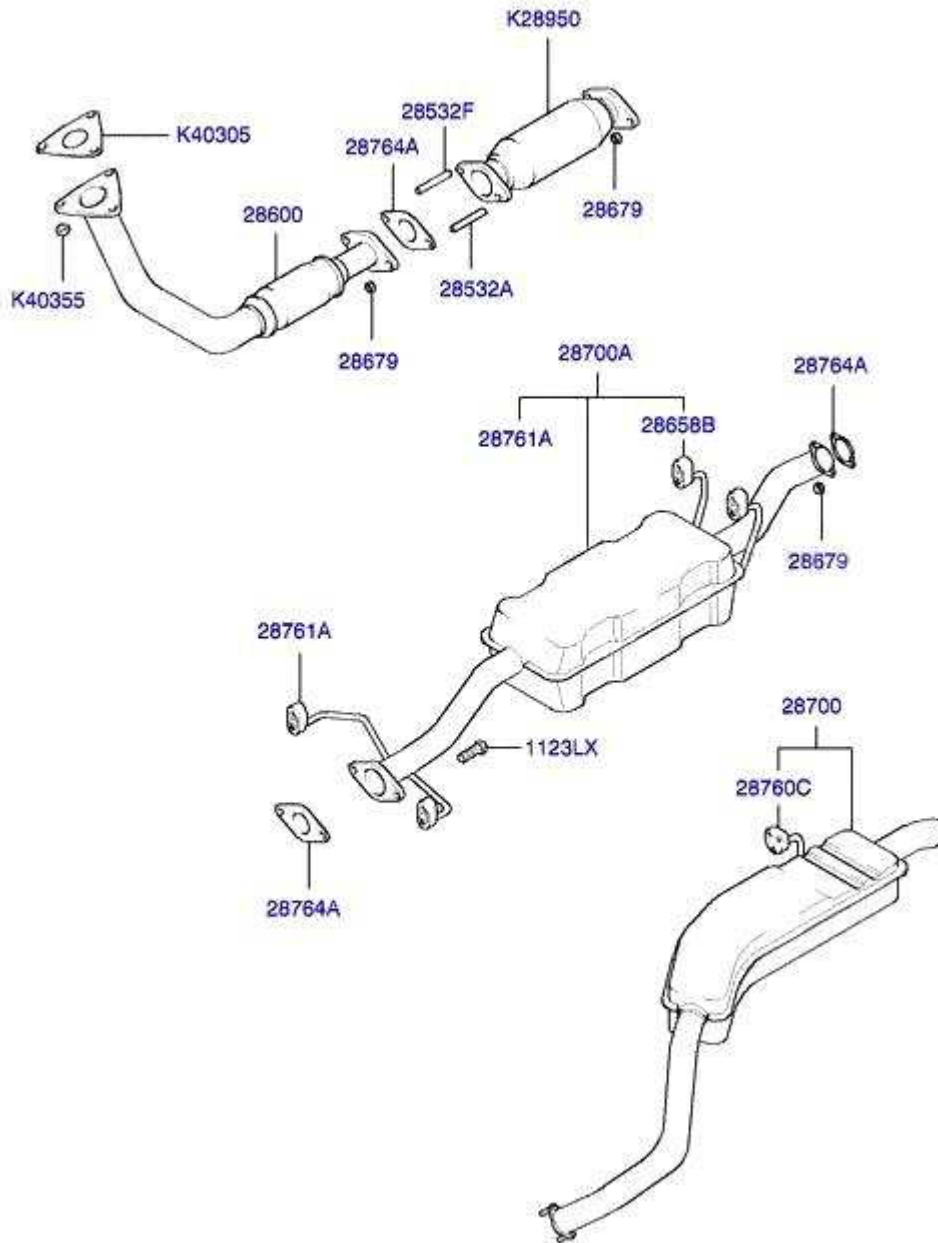


2.9L



Article	Part No.	Description
BOLT	11234-10183	3500 CC; UNLEADED PACKAGE
BOLT	11234-12301	5 DR WAGON 7, 5 DR WAGON, MIDDLE GRADE, 2900 CC; DSL PACKAGE, EMISSION(EC 2000)
	11234-12301T	5 DR WAGON 7, 5 DR WAGON, MIDDLE GRADE, 2900 CC; DSL PACKAGE, EMISSION(EC 2000)
	11234-12301T	5 DR WAGON, MIDDLE GRADE, 2900 CC; FUEL INJ-ELECTRONIC TYPE
	11234-12301	5 DR WAGON, MIDDLE GRADE, 2900 CC; FUEL INJ-ELECTRONIC TYPE
	11234-12301	5 DR WAGON, MIDDLE GRADE, 3500 CC; EMISSION(EC 2000), UNLEADED PACKAGE
	11234-12301T	5 DR WAGON, MIDDLE GRADE, 3500 CC; EMISSION(EC 2000), UNLEADED PACKAGE
	11234-12301	5 DR WAGON, MIDDLE GRADE, 3500 CC; UNLEADED PACKAGE
	11234-12301T	5 DR WAGON, MIDDLE GRADE, 3500 CC; UNLEADED PACKAGE
BOLT	11403-06123	3500 CC; EMISSION(EC 2000), UNLEADED PACKAGE

	11403-06123	3500 CC; EMISSION(EC 2005), UNLEADED PACKAGE
BOLT	11403-08123	3500 CC; UNLEADED PACKAGE
BOLT	11415-06163	3500 CC; UNLEADED PACKAGE
WASHER-PLAIN	13510-12001	D4BH(4D56 TCI); FUEL INJ-ELECTRONIC TYPE
CLIP	14890-00409	3500 CC; EMISSION(EC 2000), UNLEADED PACKAGE
	14890-00409	3500 CC; EMISSION(EC 2005), UNLEADED PACKAGE
CLIP	14890-10080	3500 CC; EMISSION(EC 2000), UNLEADED PACKAGE
	14890-10080	3500 CC; EMISSION(EC 2005), UNLEADED PACKAGE
STRAP	17993-16000	3500 CC; EMISSION(EC 2000), UNLEADED PACKAGE
	17993-16000	3500 CC; EMISSION(EC 2005), UNLEADED PACKAGE
SPRING	MB179443	D4BH(4D56 TCI); FUEL INJ-ELECTRONIC TYPE
STUD	28532-21314	2900 CC, T/C INTER COOLER, 4 SPEED AT 4WD; EMISSION(EC 2000)
STUD	28532-21310	2900 CC, T/C INTER COOLER, 4 SPEED AT 4WD; EMISSION(EC 2000)
PIPE-EXHAUST FR	28520-H1410	5 DR WAGON 7, 5 DR WAGON, MIDDLE GRADE, 2900 CC; DSL PACKAGE, EMISSION(EC 2000)
	28520-H1410	5 DR WAGON, MIDDLE GRADE, 2900 CC; FUEL INJ-ELECTRONIC TYPE
	28520-H1320	5 DR WAGON, MIDDLE GRADE, D4BH(4D56 TCI); FUEL INJ-ELECTRONIC TYPE
PIPE-EXHAUST FR,LH	28520-H1830	5 DR WAGON, MIDDLE GRADE, 3500 CC; EMISSION(EC 2000), UNLEADED PACKAGE
	28520-H1810	5 DR WAGON, MIDDLE GRADE, 3500 CC; UNLEADED PACKAGE
PIPE-EXHAUST FR,RH	28530-H1830	5 DR WAGON, MIDDLE GRADE, 3500 CC; EMISSION(EC 2000), UNLEADED PACKAGE
	28530-H1810	5 DR WAGON, MIDDLE GRADE, 3500 CC; UNLEADED PACKAGE
PIPE-EXHAUST CTR	28600-H1320	D4BH(4D56 TCI); FUEL INJ-ELECTRONIC TYPE
HANGER-EXHAUST PIPE	28762-3B000	2900 CC, D4BH(4D56 TCI)
NUT	28679-21000	ALL
PIPE-TAIL W/MUFFLER	28770-H1620	5 DR WAGON 7, 5 DR WAGON, MIDDLE GRADE, 2900 CC; DSL PACKAGE, EMISSION(EC 2000)
	28770-H1830	5 DR WAGON, MIDDLE GRADE, 2900 CC; FUEL INJ-ELECTRONIC TYPE
	28770-H1830	5 DR WAGON, MIDDLE GRADE, 3500 CC; EMISSION(EC 2000), UNLEADED PACKAGE
	28770-H1830	5 DR WAGON, MIDDLE GRADE, 3500 CC; UNLEADED PACKAGE
	28770-H1320	5 DR WAGON, MIDDLE GRADE, D4BH(4D56 TCI); FUEL INJ-ELECTRONIC TYPE
PIPE ASSY-MUFFLER MAIN	28700-H1450	5 DR WAGON 7, 5 DR WAGON, MIDDLE GRADE, 2900 CC; DSL PACKAGE, EMISSION(EC 2000)
	28700-H1410	5 DR WAGON, MIDDLE GRADE, 2900 CC; FUEL INJ-ELECTRONIC TYPE
	28700-H1830	5 DR WAGON, MIDDLE GRADE, 3500 CC; EMISSION(EC 2000), UNLEADED PACKAGE
	28700-H1320	5 DR WAGON, MIDDLE GRADE, D4BH(4D56 TCI); FUEL INJ-ELECTRONIC TYPE
MUFFLER ASSY	28700-H1870	3500 CC; UNLEADED PACKAGE
HANGER	28760-H1010	ALL
HANGER-EXHAUST PIPE	28761-H1000	2900 CC
GASKET-EXHAUST PIPE	28764-34150	ALL
HANGER-EXHAUST PIPE	28768-26000	ALL

HANGER-EXHAUST PIPE	28768-36000	D4BH(4D56 TCI)
CONVERTER ASSY- CATALYTIC	28950-4X700	2900 CC, T/C INTER COOLER, 4 SPEED AT 4WD; EMISSION(EC 2000)
	28950-4X710	2900 CC, T/C INTER COOLER, 5 SPEED MT 4WD; EMISSION(EC 2000)
	28950-4X400	2900 CC; EMISSION(EC 2000), FUEL INJ-ELECTRONIC TYPE
	28950-39830	3500 CC; EMISSION(EC 2000), UNLEADED PACKAGE
	28950-39810	3500 CC; UNLEADED PACKAGE
	28950-39850	3500 CC; UNLEADED PACKAGE
SENSOR ASSY-OXYGEN	39210-39860	3500 CC; EMISSION(EC 2000), UNLEADED PACKAGE
	39210-39860	3500 CC; EMISSION(EC 2005), UNLEADED PACKAGE
SENSOR ASSY-OXYGEN RH	39210-39800	3500 CC; UNLEADED PACKAGE
SENSOR ASSY-OXYGEN FR	39210-39840	3500 CC; EMISSION(EC 2000), UNLEADED PACKAGE
	39210-39840	3500 CC; EMISSION(EC 2005), UNLEADED PACKAGE
BRKT-CONNECTOR MTG	39211-39830	3500 CC; UNLEADED PACKAGE
BRKT-CONNECTOR	39211-39840	3500 CC; UNLEADED PACKAGE
BRKT-OXYGEN SENSOR RR	39211-39860	3500 CC; EMISSION(EC 2000), UNLEADED PACKAGE
	39211-39860	3500 CC; EMISSION(EC 2005), UNLEADED PACKAGE
BRKT-OXYGEN SENSOR RR	39211-39870	3500 CC; EMISSION(EC 2000), UNLEADED PACKAGE
	39211-39870	3500 CC; EMISSION(EC 2005), UNLEADED PACKAGE
GASKET-EXH.PIPE	0K011-40305	2900 CC
NUT	0K201-40355	2900 CC; EMISSION(EC 2000), DSL PACKAGE